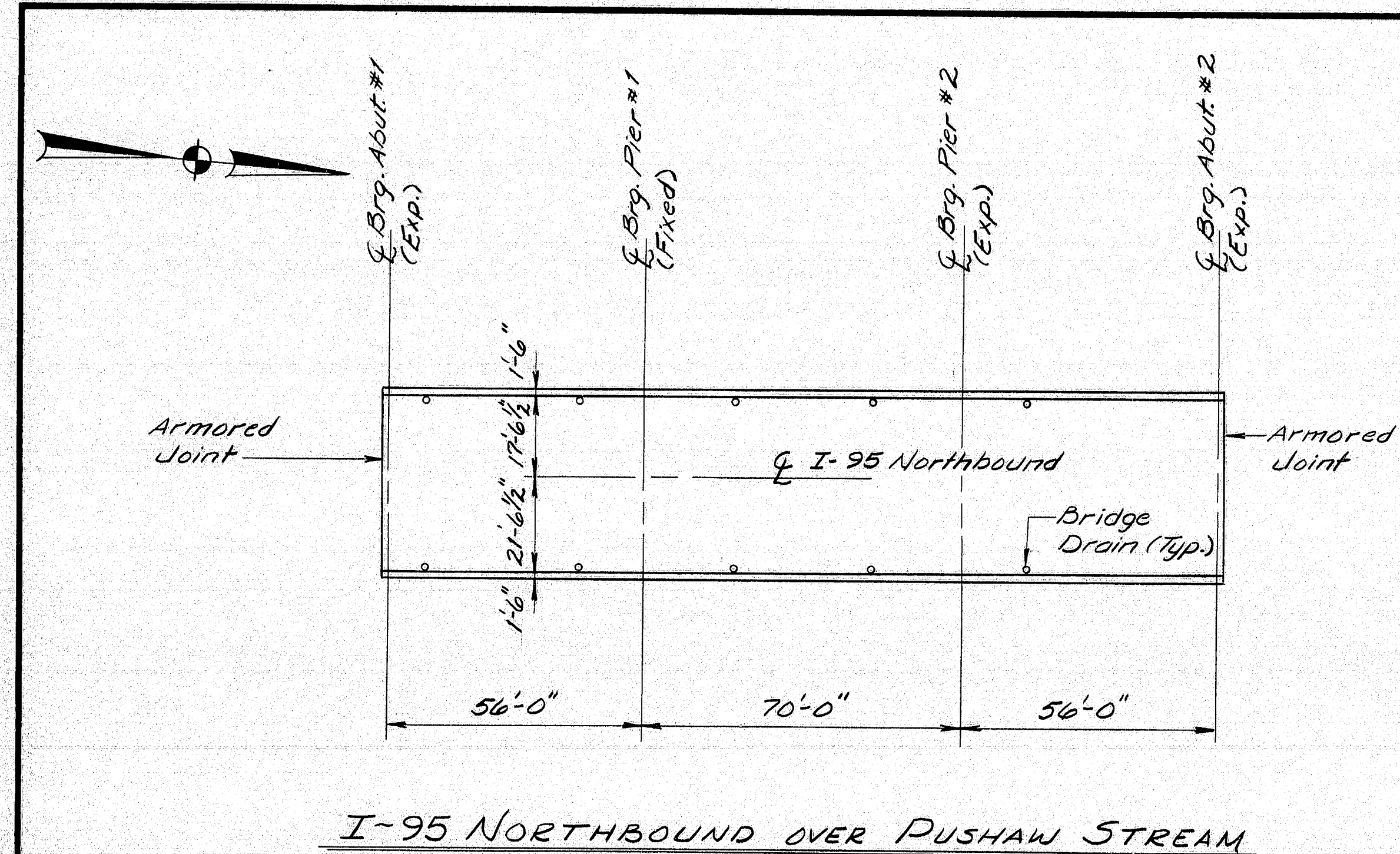
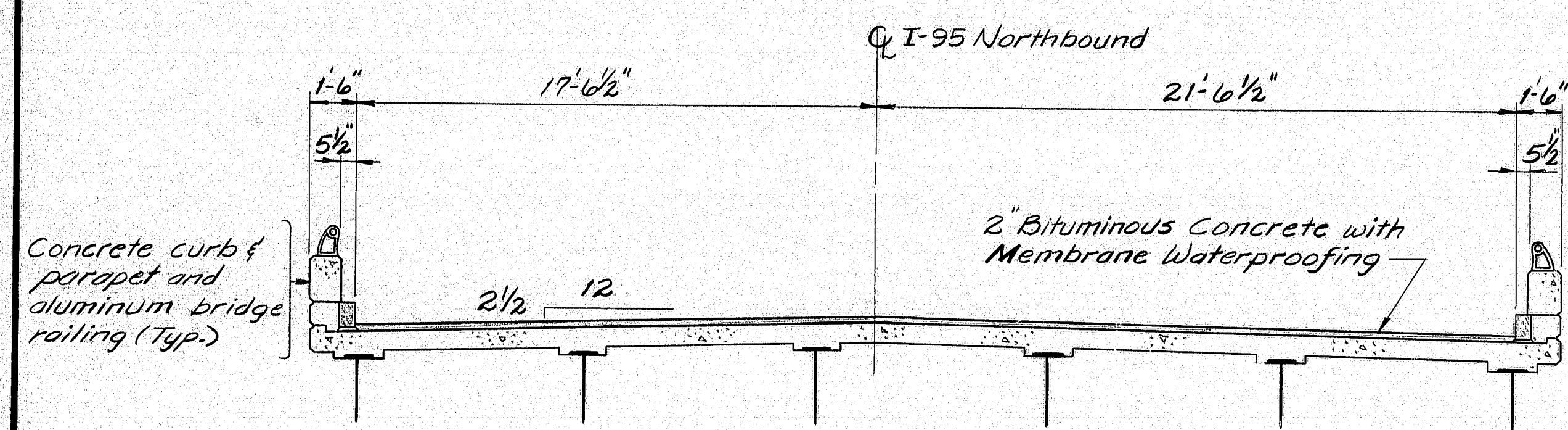


F.H.W.A. REV. NO.	STATE	PROJECT NUMBER	SHEET NO.	TOTAL SHEETS
1	MAINE	95-8(120)	17	33



I-95 NORTHBOUND OVER PUSHAW STREAM



EXISTING TRANSVERSE SECTION FOR BOTH
PUSHAW STREAM & KIRKLAND ROAD

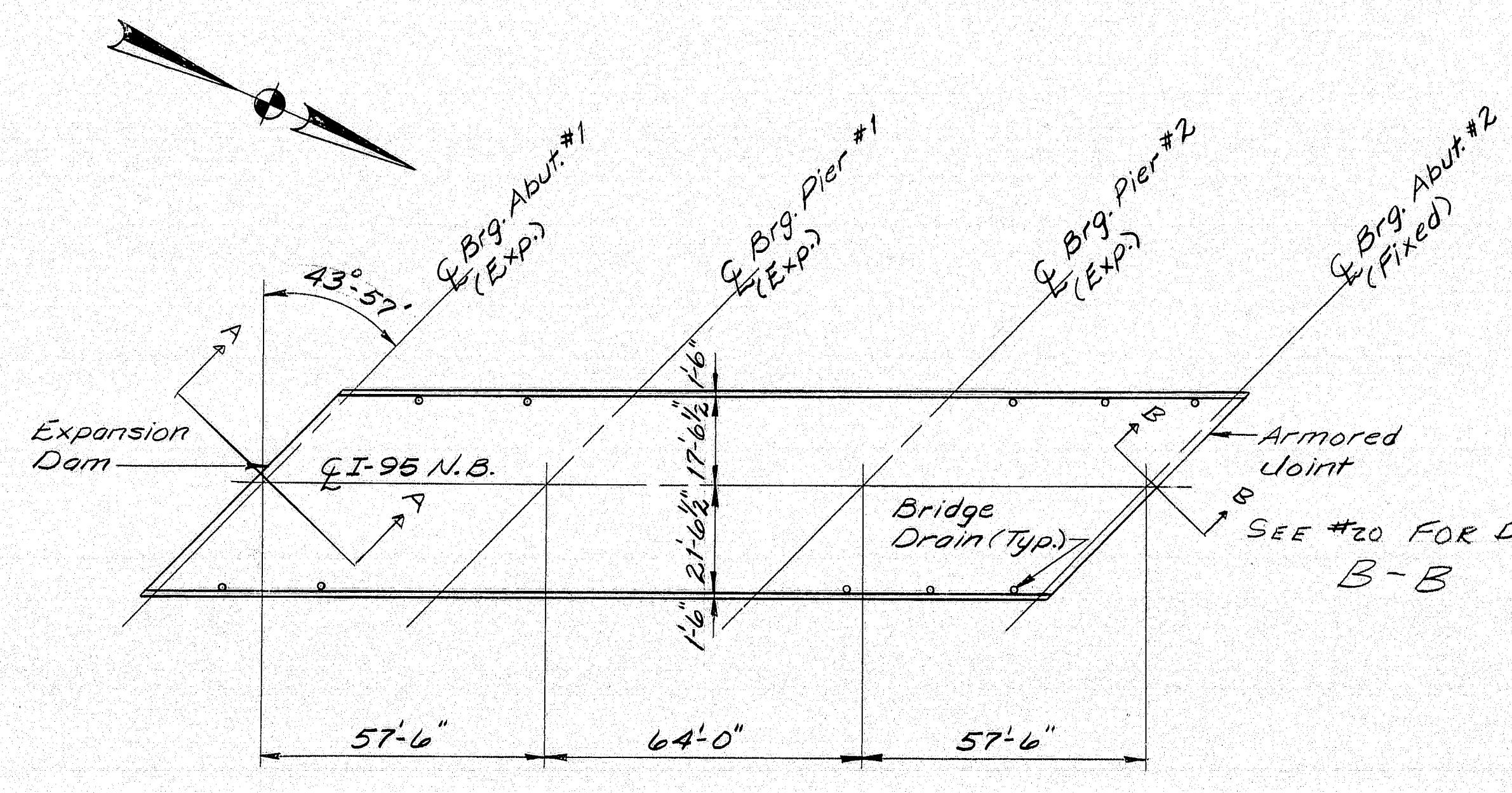
GENERAL NOTES

PUSHAW STREAM

1. Remove existing bituminous pavement and membrane waterproofing and replace it with new membrane waterproofing and 3" hot bituminous pavement.
2. Clean and paint all structural steel.
3. Provide a 100' grade transition of 1" at each approach.
4. Refer to notes #3, 6, 7, 8 & 10 of Kirkland Road.

KIRKLAND ROAD

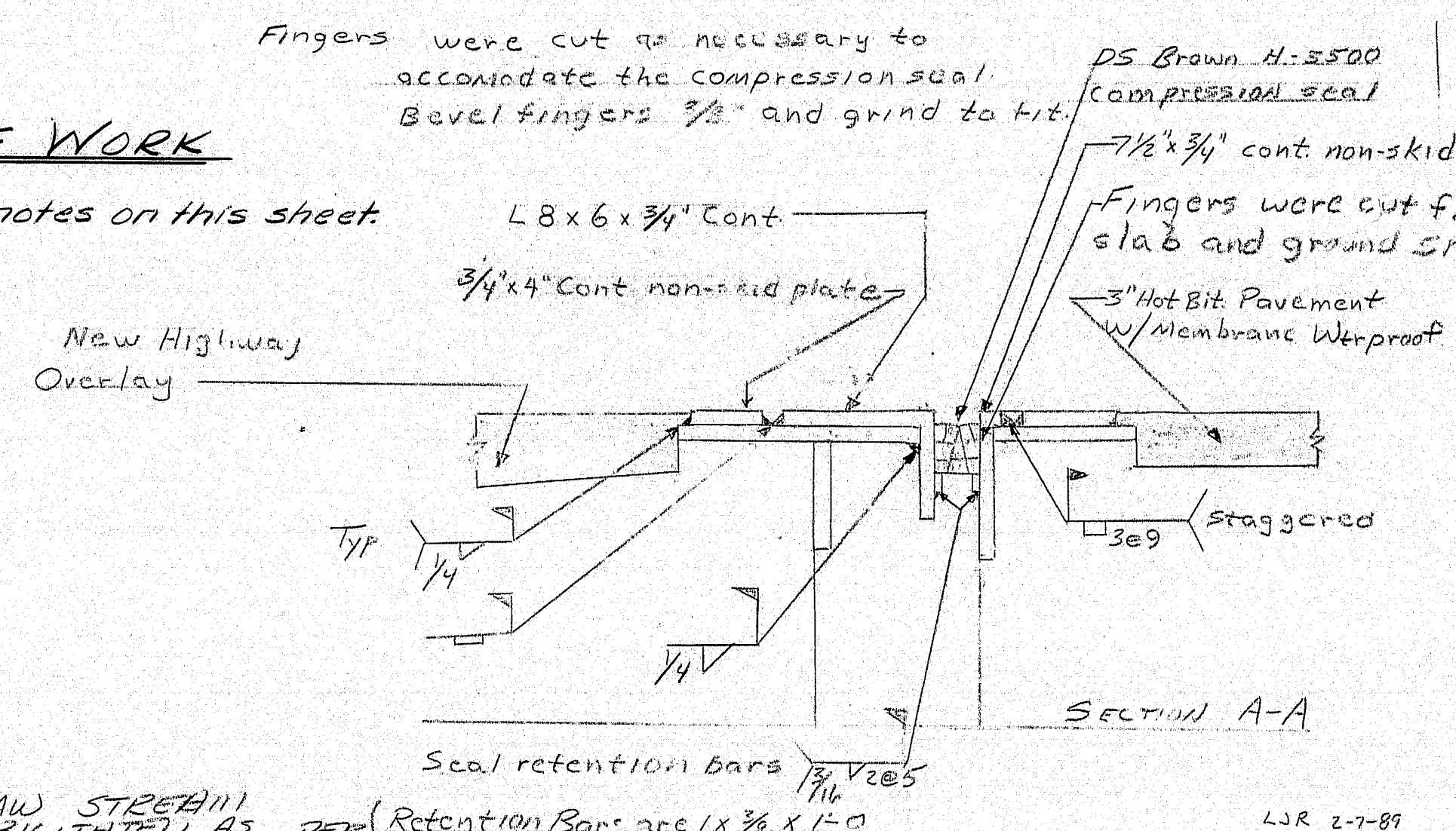
1. Grind existing wearing surface 1/4" and replace it with 1 1/2" hot bituminous pavement. The grinding of the bridge and approach pavement shall be paid for under item 202.202.
2. Clean and paint abutment bearings and bottom flanges within 2' of bearings.
3. Maintain one 15'-0" wide lane for traffic.
4. All labor and material, including concrete removal, new concrete, reinforcing steel and hardware required for the construction of new concrete endposts will be paid for under item 606.173 Bridge Connections.
5. All reinforcing shall have 2" minimum cover.
6. Nuts for 3/8" anchor bolts shall be incidental to item 606.173. Nuts shall conform to A.S.T.M. A563 Grade DH, galvanized in accordance with A.S.T.M. A153 or Grade C3 plain.
7. After installation of the guardrail is complete upset the thread on the anchor bolts in 3 places around each bolt, at the junction of the nut and the exposed thread with a center punch or similar tool.
8. All labor and materials required for the installation of W-Beam Terminal Connectors will be considered incidental to Guard Rail items.
9. Apply protective coating to all exposed surfaces of the new concrete endposts. Payment to be incidental to contract.
10. Depress pavement of drains as approved by the Engineer.



I-95 NORTHBOUND OVER KIRKLAND ROAD

SCOPE OF WORK

See general notes on this sheet.



Plans of the existing bridge are available for the Contractors reference at the Bridge Design office in Augusta. The plans are reproductions of original drawings as prepared for the construction of the bridge and it is very unlikely that the plans will show any const. field changes or any alterations which may have been made to the bridge in its life span.

99-476

Old Town 95-8(120)

TRAFFIC DATA

1987 AADT...3,765
2007 AADT...5,345
DHV...695
T %...17
D %...100
18 kip F2.5...806

SPECIFICATIONS

DESIGN: per AASHTO Standard Specifications for Highway Bridges 1983 & Interim Specs for 1984 & 1985.
CONTRACT: State of Maine, Department of Transportation, Standard Specifications Highways and Bridges, Revision of January 1984.

DESIGN LOADING

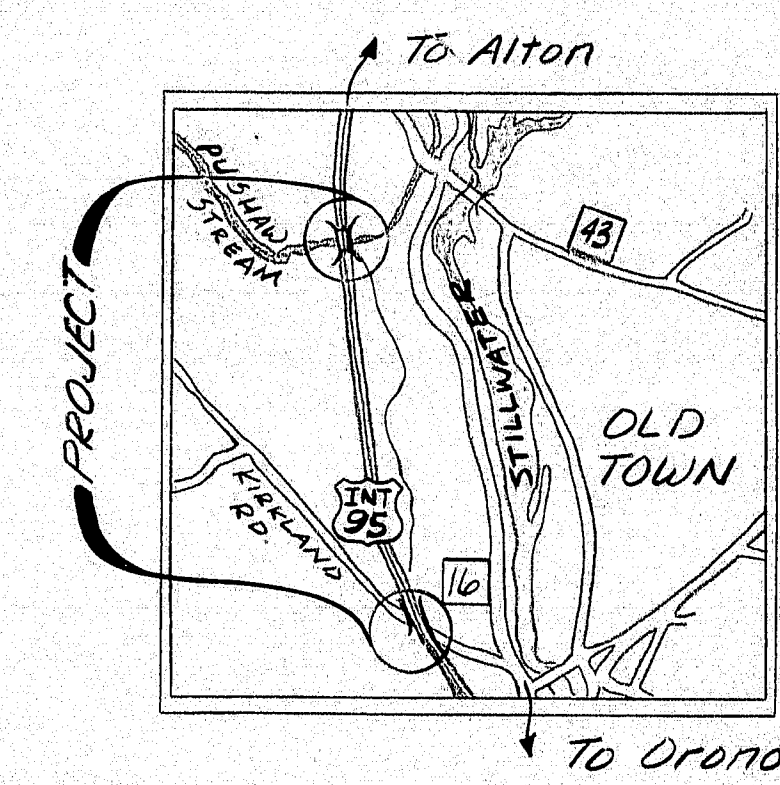
LIVE LOAD: HS20 Existing (Both bridges)

MATERIALS

CONCRETE: Class AA
REINFORCING STEEL: ASTM A615 Grade 60
STRUCTURAL STEEL: A36
High Strength Bolts: ASTM A325 Type 3

BASIC DESIGN STRESSES

CONCRETE: $f_c = 3,000$ psi
REINFORCING STEEL: $f_y = 60,000$ psi
STRUCTURAL STEEL: ASTM A36... $f_y = 36,000$ psi
ASTM A325... $f_v = 25,000$ psi

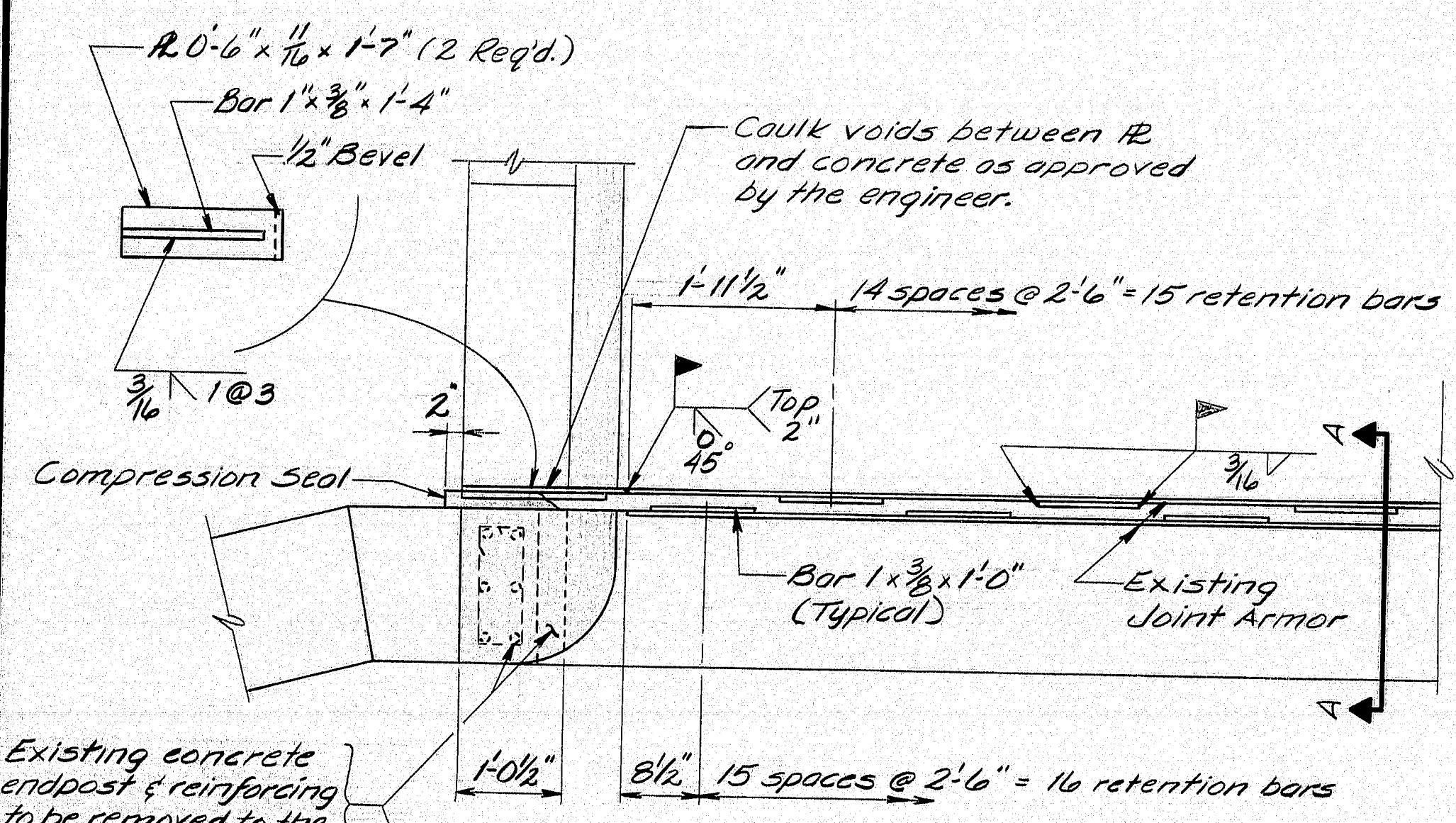


Scale in miles
0 1 2

Bridge nos. Push. 6059, Kirk #6060

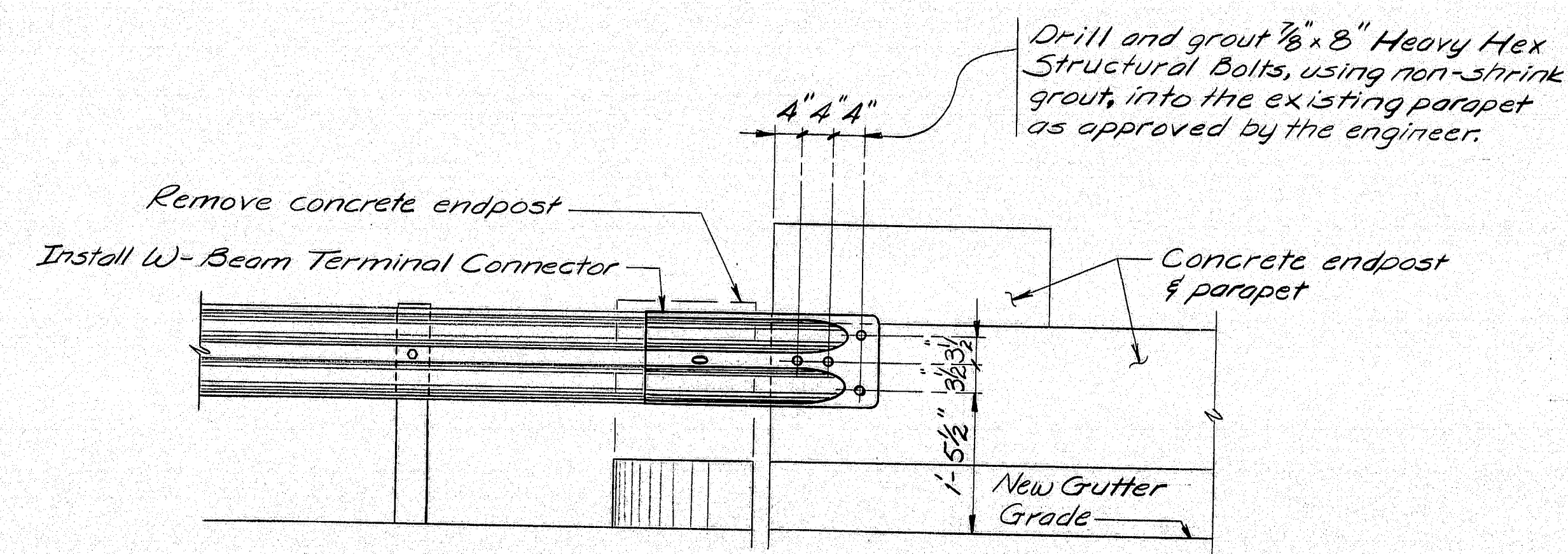
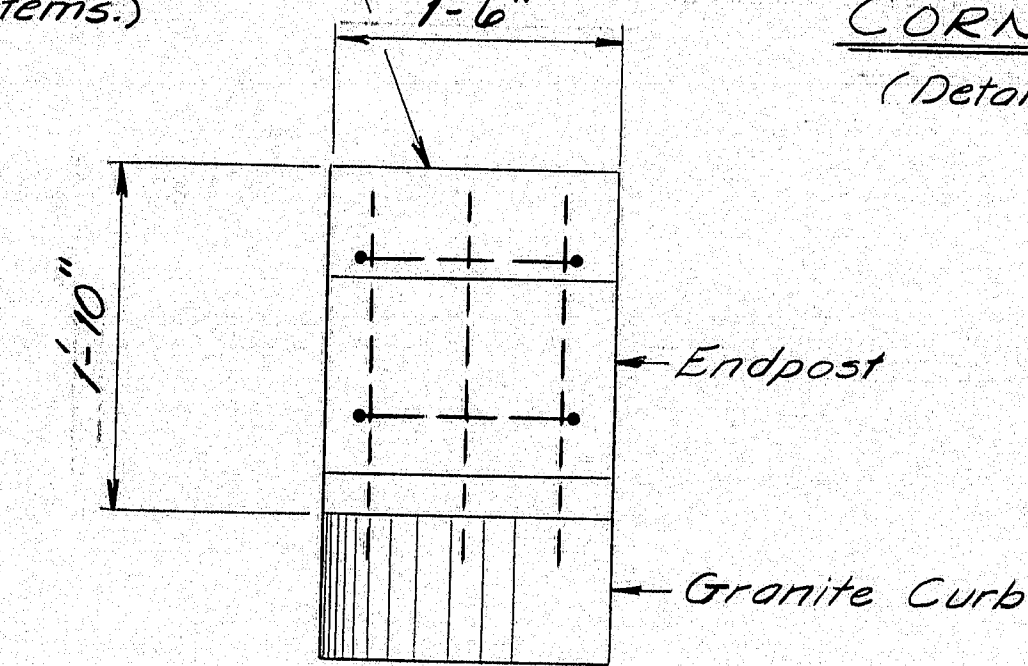
STATE OF MAINE
DEPARTMENT OF TRANSPORTATION
INTERSTATE 95 NORTHBOUND
OVER
PUSHAW STREAM & KIRKLAND Rd.
in the town of
OLD TOWN
PENOBSCOT COUNTY
GENERAL PLAN
SHEET 1 OF 3 AUGUSTA, MAINE DEC. 1986

F.R.M.A. REV. NO.	STATE	PROJECT NUMBER	SHEET NO.	TOTAL SHEETS
1	MAINE	95-B(120)	18	33
		2653.0		

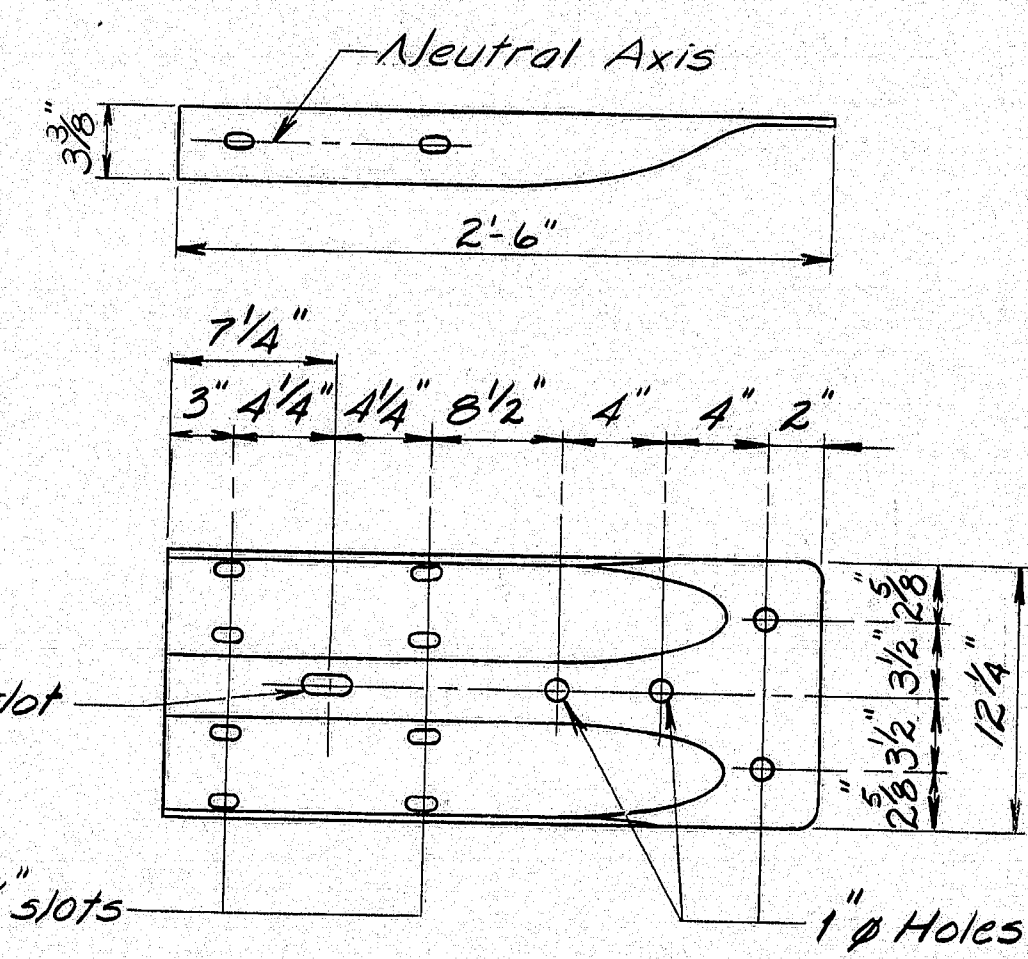


PLAN AT SOUTHWEST CORNER OF BRIDGE
(Detail is typ. for southeast corner)

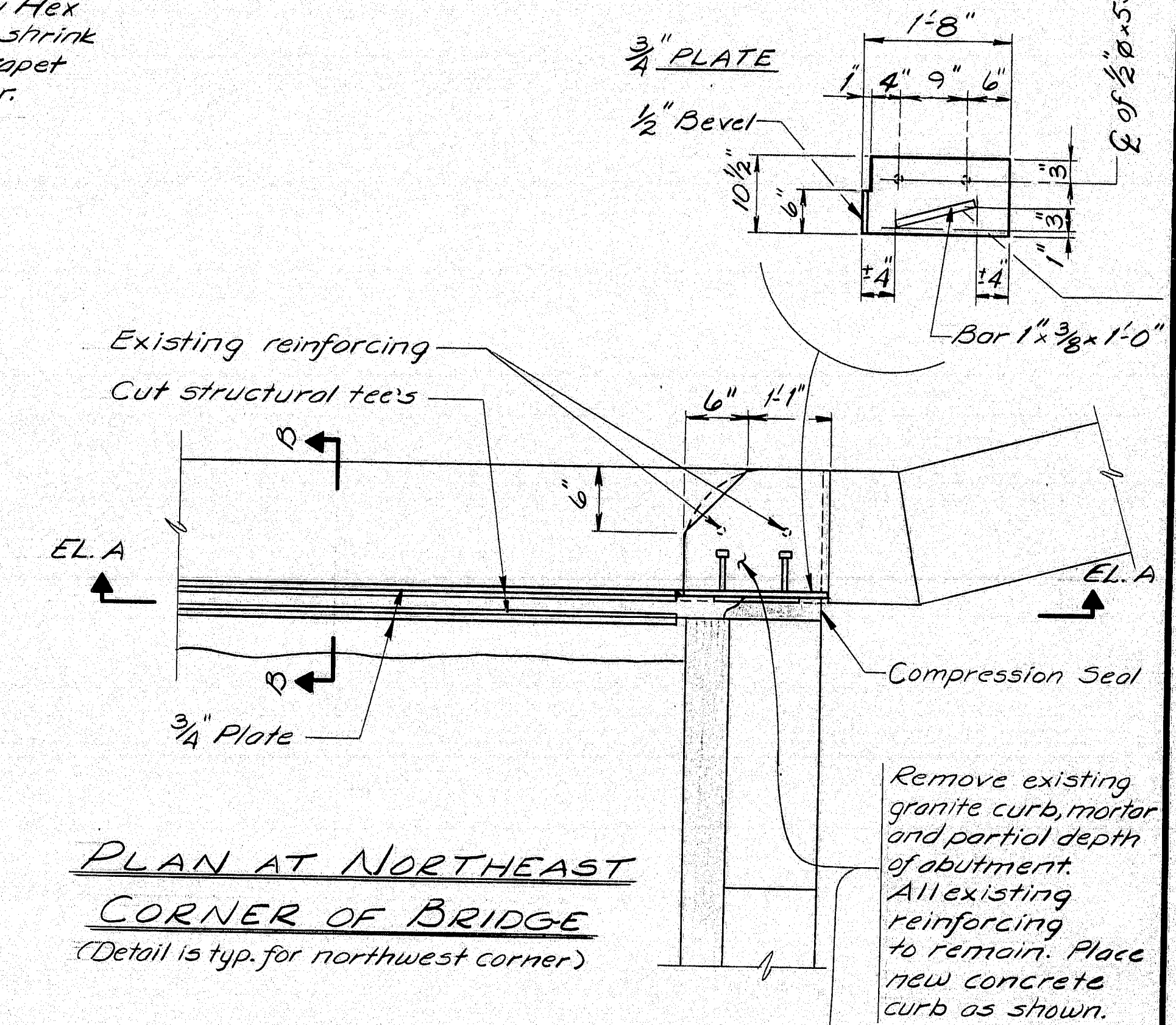
Existing concrete endpost & reinforcing to be removed to the top of granite curb. Work considered to be incidental to guard rail items.



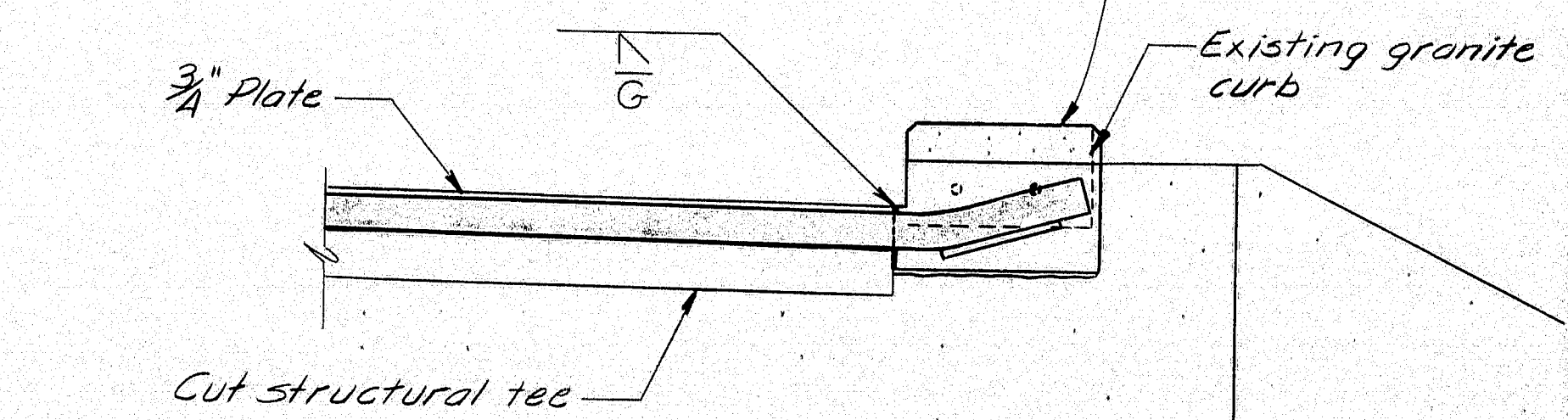
GUARDRAIL CONNECTION
(Typical @ both southern endposts)



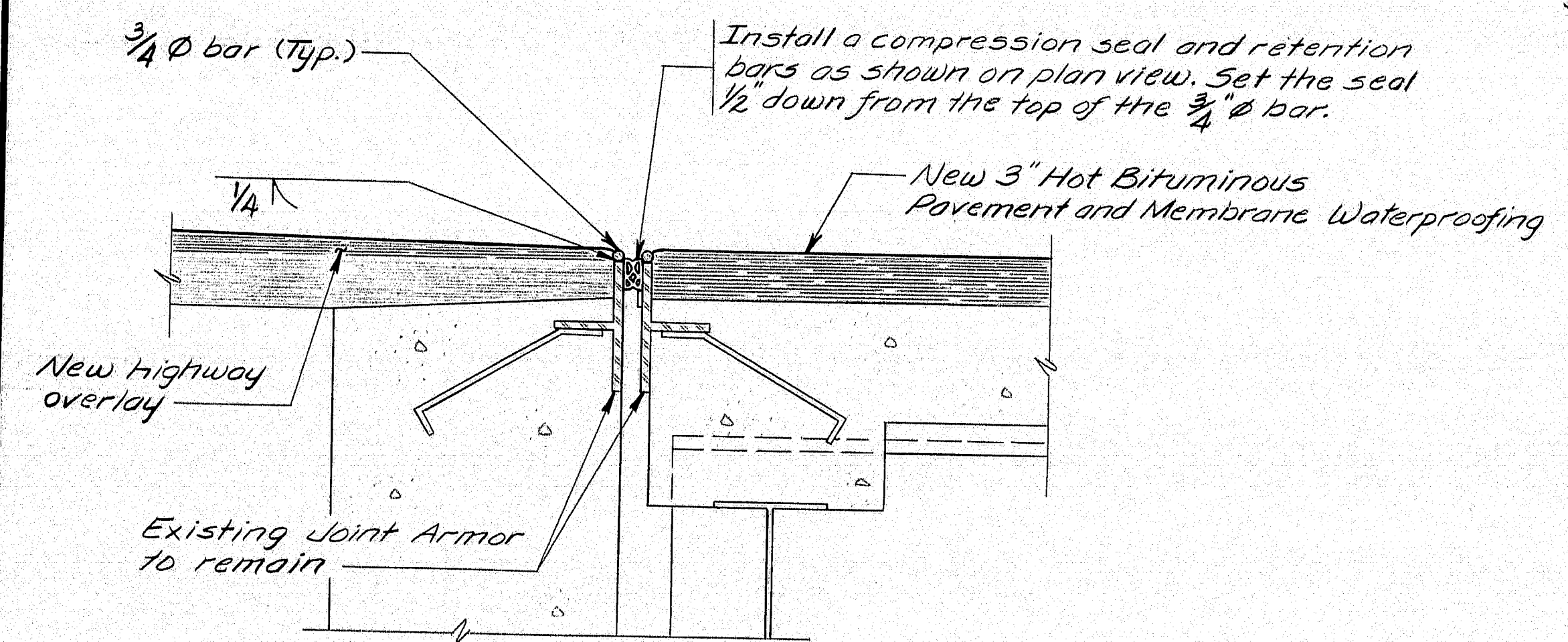
W-BEAM TERMINAL CONNECTOR



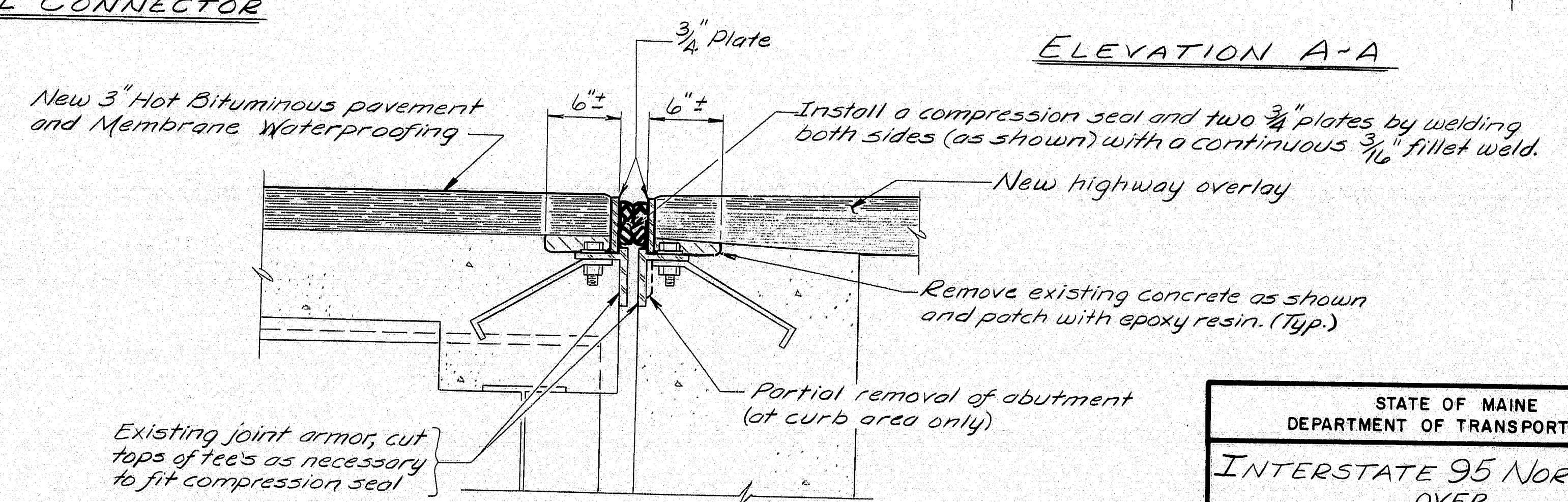
PLAN AT NORTHEAST CORNER OF BRIDGE
(Detail is typ. for northwest corner)



ELEVATION A-A



SECTION A-A



SECTION B-B

STATE OF MAINE DEPARTMENT OF TRANSPORTATION
INTERSTATE 95 NORTHBOUND OVER
PUSHAW STREAM & KIRKLAND RD. In the town of OLD TOWN PENOBSCOT COUNTY
PUSHAW STREAM DETAILS
SHEET 2 OF 3 AUGUSTA, MAINE

99-477

Old Town 95-B(120)

PROJECT DESIGN ENGINEER	DATE
BY JEB V. BARNES	1-87
DESIGN - DETAILED	
CHECKED	
REVISIONS	
FIELD CHANGES	

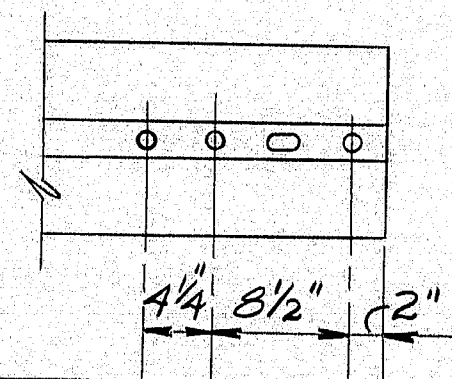
BRIDGE 44132 457101

PLANS	PROJECT DESIGN ENGINEER	BY	DATE
	DESIGN - DETAILED	JEB	L Benner 1-87
	CHECKED	LRT	1-87
	REVISIONS		
	FIELD CHANGES		

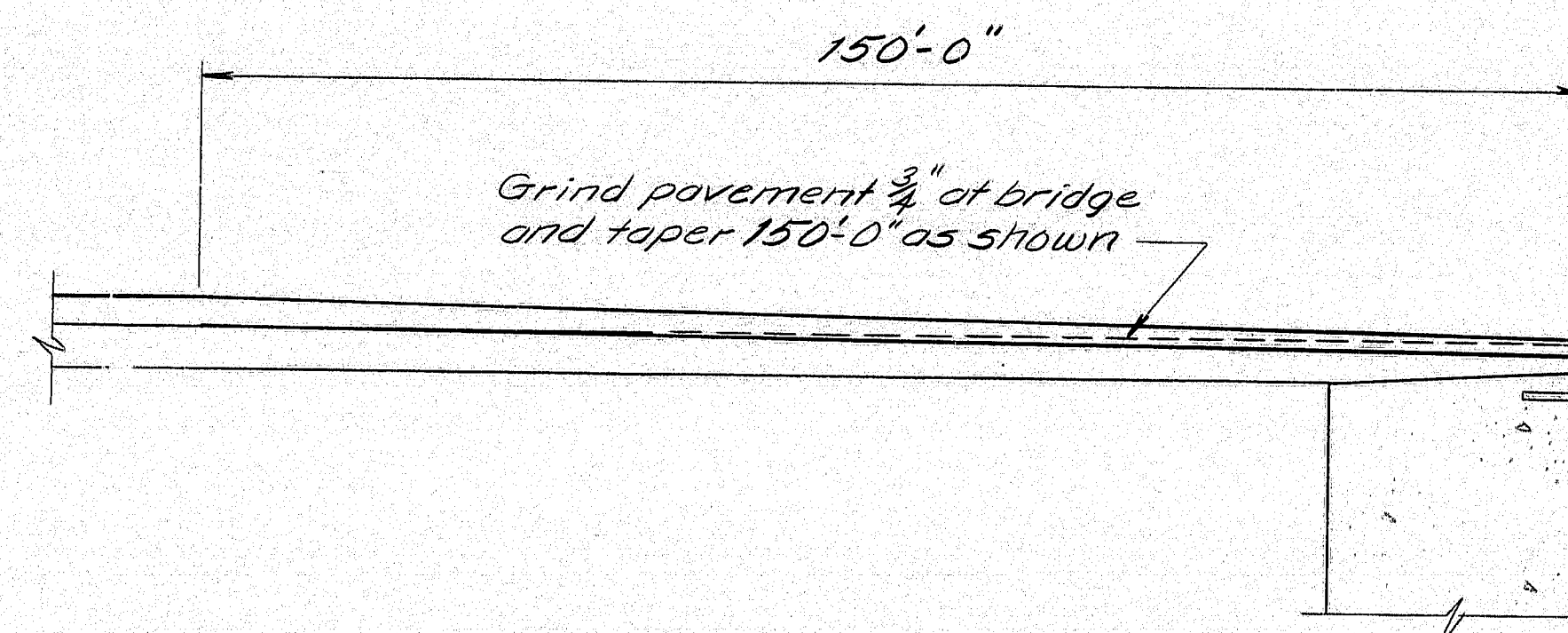
6'-3" 6'-3" 8 spaces @ 3'-1 1/2". Drill or punch additional 3/4"-2 1/2" slotted holes as necessary

* Guardrail connection @ new endposts on Kirkland Road shall be similar however add'l. guard rail modifications are necessary. See detail below.

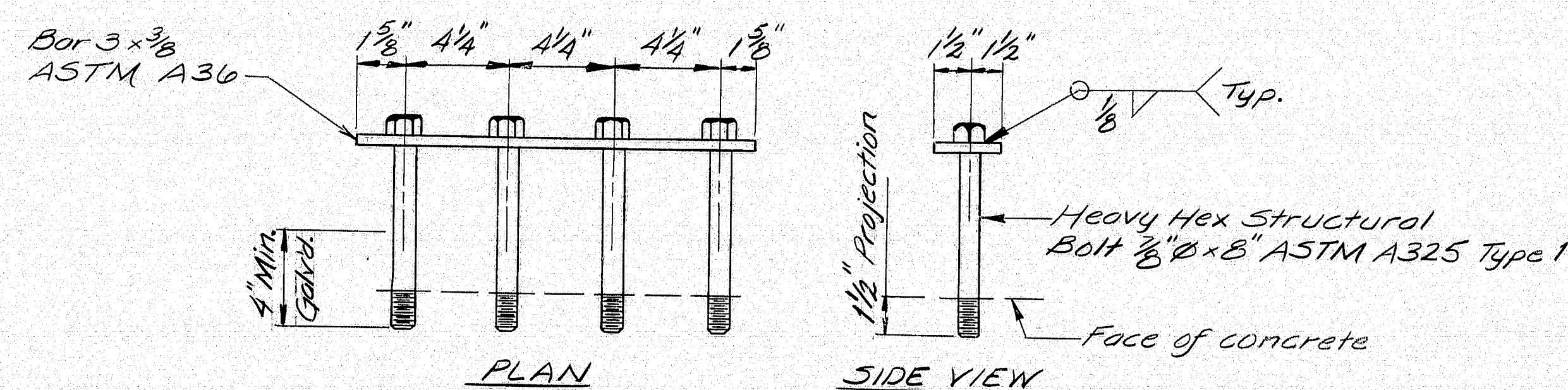
Additional 1 1/16" ϕ holes
to be drilled or punched
at rebuilt endpost only.



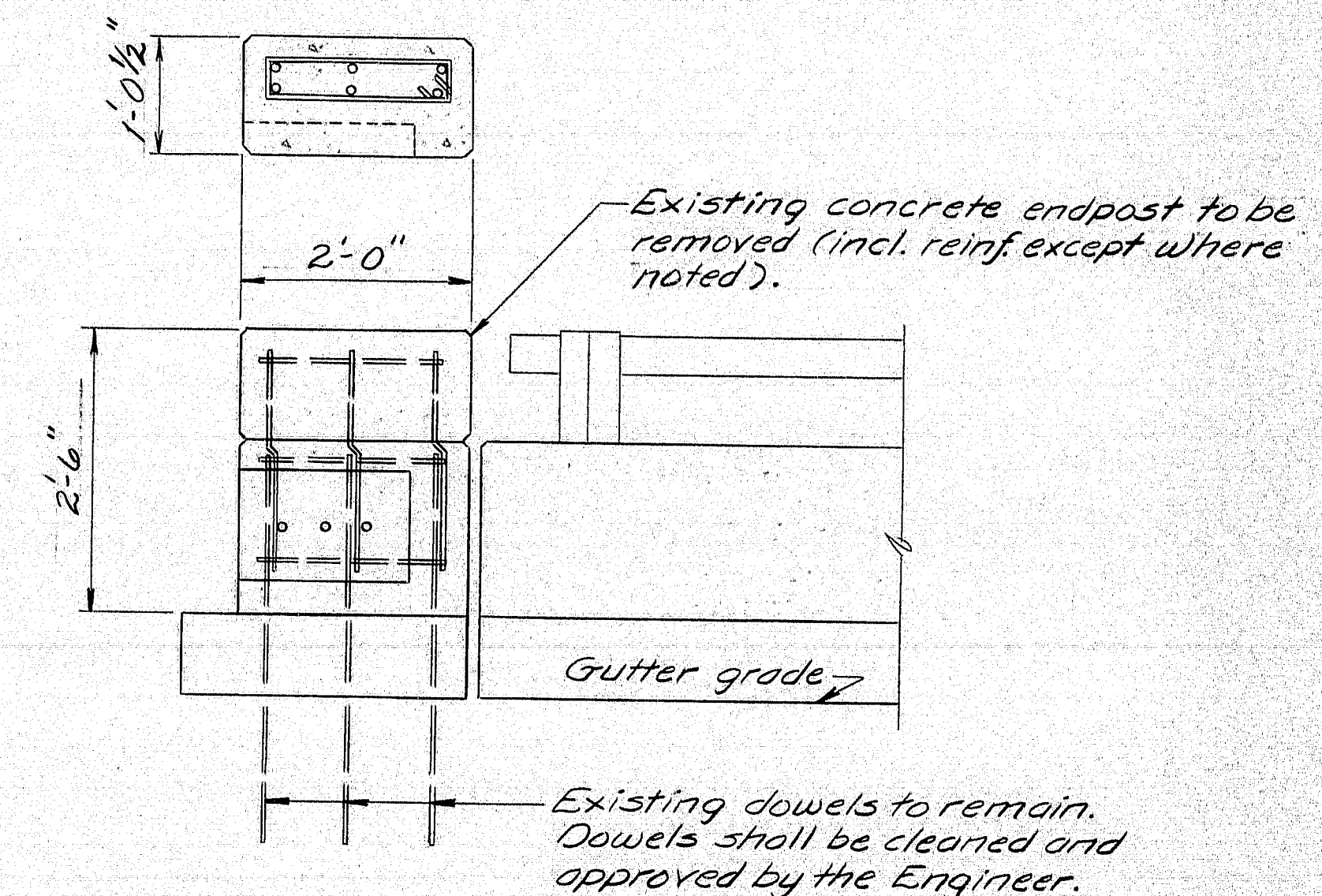
GUARDRAIL CONNECTION AT
NORTHEAST ENDPOST



PAVEMENT TRANSITION AT APPROACHES



GUARDRAIL ANCHORAGE (Southern endposts only)



The image contains three hand-drawn technical drawings:

- ENDPOST SECTION:** A cross-section of an endpost. The top width is $10\frac{1}{2}"$. The top flange is $3\frac{1}{2}"$ thick. The main body is labeled "A501 or A500". Below this, a smaller section is shown with a height of $5"$ and a width of $1'-8"$, labeled "A501*".
- A500*:** A cross-section of a component, likely a base plate, with a height of $5"$ and a width of $1'-0"$.
- REBUILT ENDPOST AT SOUTHERN:** A detailed plan view of the rebuilt endpost. It shows a central rectangular area with a width of $2'-0"$ and a height of $8'-4"$. The central area is divided into four quadrants, each labeled $4'-4"$. The central area is surrounded by a $3"$ wide border. The border is labeled "Q of bolt locations (guardrail anchorage)". The central area is labeled "A500". The border is labeled "A501". The bottom border is labeled "A501". The central area is labeled "4-A502, (2 E.F., bar is Existing dowels)".

REBUILT ENDPOST AT SOUTHERN END
(Both sides are typ.)

* All reinforcing shall be #5 bars,
all dimensions are taken out to out.

STATE OF MAINE
DEPARTMENT OF TRANSPORTATION

INTERSTATE 95 NORTHBOUND
OVER
PUSHAW STREAM & KIRKLAND RD.
in the town of
OLD TOWN
PENOBSCOT COUNTY
KIRKLAND ROAD DETAILS

SHEET 3 OF 3 AUGUSTA, MAINE

99-478

Old Town 95-8(120)